

Processing Parameters

Method Last modified by think at 16:39:30 on 2023年3月26日
 Using Flow Rate Correction No
 Mark-Houwink K ((10e-5) dL/g) 14.100
 Mark-Houwink Alpha 0.700
 Concentration Detector Used in Analysis RI
 Injection volume (µL) 100.00
 Flow rate (mL/min) 1.00

Column Calibration Details

Name 2023-03-24-001
 Created by think at 15:02:28 on 2023年3月24日
 Last modified by think at 15:20:10 on 2023年3月24日
 Comments GPC Column Calibration created 2023年3月24日 by think
 GPC Column Calibration amended 2023年3月24日 by think
 GPC Column Calibration amended 2023年3月24日 by think

Calibration Type Narrow Standard Curve Fit Used 1
 Concentration Detector Used RI
 Calibration Curve $y = -0.591x + 13.63$
 High Limit MW RT (mins) 11.59200 Low Limit MW RT (mins) 18.51120
 High Limit MW (g/mol) 6545000 Low Limit MW (g/mol) 580
 Flow Rate Marker Name Flow Marker RT (mins) 0.00000
 K (Input) ((10e-5) dL/g) 14.100
 Alpha (Input) 0.700
 Residual Sum Of Squares 0.0236078 Corrected Sum Of Squares 18.7176
 Coeff. Of Determination 0.998739 Standard Y Error Estimate 0.0512161
 Linear Correlation Coeff -0.999368

Molecular Weight Averages

Peak	Mp (g/mol)	Mn (g/mol)	Mw (g/mol)	Mz (g/mol)	Mz+1 (g/mol)	Mv (g/mol)
Peak 1	631	512	555	596	631	549
PD						
	1.084					

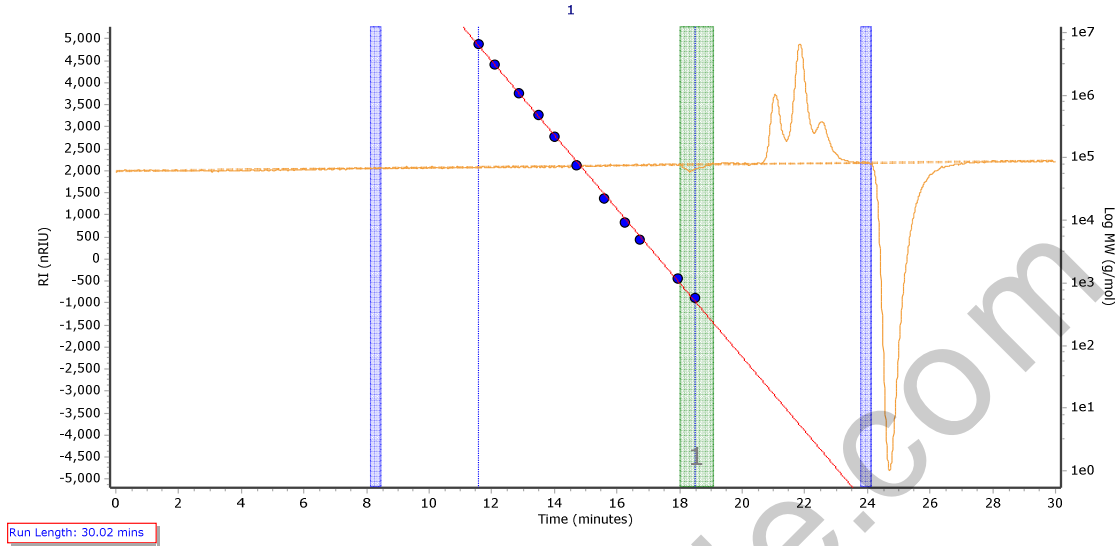
MW Ranges Calculated

Peak Number	High Limit MW	Low Limit MW	Percent MW
1	944	500	61.73
1	500	217	38.27

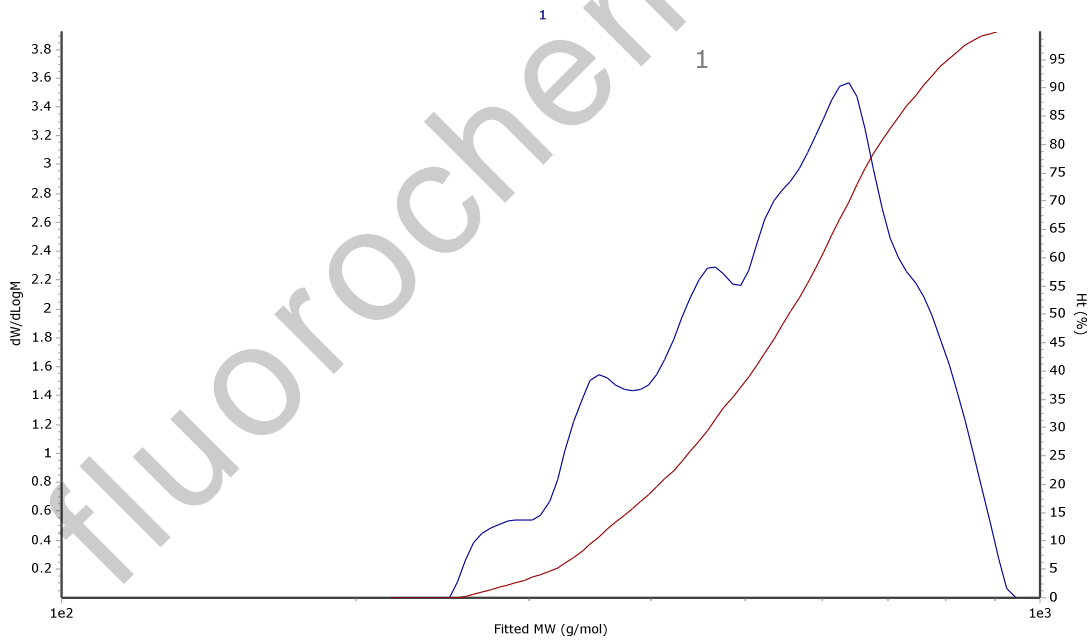
Analyst: Date:

Checked By: Date:

Chromatogram Plot



Distribution Plot



Analyst:

Date:

Checked By:

Date:

Peak Results

	Detector Type	Peak Max RT (mins)	Peak Height (mV)	Peak Height (%)	Peak Area (mV.s)	Area (%)
Peak 1	RI	18.31680	-160.389	100.00	4555.758	100.00

fluorochemie.com

Analyst:

Date:

Checked By:

Date: